

## Placement

Make certain the speaker is located between wall studs to avoid cutting into studs. Place the supplied template a minimum of 5/8" from any studs. Level it and draw a line around it to mark the cutout. Take care when cutting the hole to avoid cutting into pipes or electrical conduits. If you encounter pipes, electrical conduits or other obstacles you may have to select another location for the speaker.

## Installation

First install the frame. Loosen screws A (fig. 1) by turning them counter clockwise. Loosen all 6 screws until the „Dog ears” B (fig. 2) can move freely. Do not remove the screws. Install the frame into the wall and level it (notice TWEETER and WOOFER markings on the frame). Turn screws A clockwise until they are tightened and the frame is firmly installed.

Next install the speaker into the frame. Before installing the speaker connect the speaker wires as described under „Hookup” Remove the grill from the speaker. Place the speaker into the frame and secure with the 6 screws supplied.

Before reinstalling the grill on the speaker make adjustments as described under „Adjustments”. Reinstall the grill. If the grill has a loose fit and/or is vibrating when the speaker is playing remove the grill, install the supplied non-curing glue strips at locations C (fig. 1) and reinstall the grill.

## Hookup

The receiver/amplifier must be turned OFF before you connect the speaker or it may cause damage to the amplifier.

Connect the speaker wires from the receiver/amplifier to the speakers. When connecting the speaker wires make sure that LEFT (L) is connected to LEFT (L), RIGHT (R) to RIGHT (R), POSITIVE (+) to POSITIVE (+) and NEGATIVE (-) to NEGATIVE (-). If terminals are color coded, RED is POSITIVE (+) and BLACK is NEGATIVE (-).

## Custom painting

The grill and frame may be painted to match your decor. Paint the grill and frame separately before mounting to the wall. After painting the grill blow air through the holes to prevent clogging. The speaker is supplied with a sheet of acoustically transparent foam. This may be inserted behind the grill so the holes look less dark.

## Maintenance

All Jamo loudspeakers are made of modern thoroughly tested materials, which will usually require no maintenance, other than dusting or drying with a soft, dry cloth. If the loudspeakers have become greasy, the grease may be removed by moistening the cloth with water and possible using a mild detergent.

### NOTE:

Never use any scouring powder, household cleansers or any other solvents for cleaning the loudspeaker.

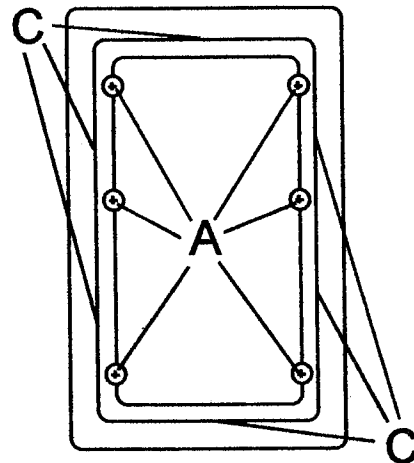


Fig. 1

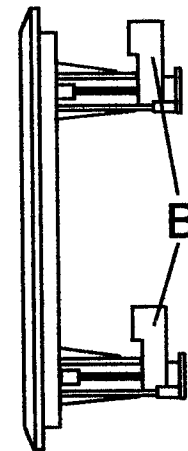


Fig. 2